



"The best companies hire for attitude and personality. The attitude can be great, but the applicant's personality must fit the culture."

COMPANY PROFILE

Atarashi Group, headquartered in Bhiwadi, India, Established in 2018 with CPRI APPROVED (ISO 9001-2015), We are dedicated to delivering superior Electrical turnkey projects in India and panel manufacturing services. (We offer best quality Products and efficient services in the field of, Electrical Trunking Project, Electrical Substation up to 132 kV, Captive Power Plants, Solar System, Power Distribution System, HVIMV & LV Switchgear, Package Substation, Transformers RMU, DG Sets. External Lightning Work, Internal Electrical Services, Cable Distribution Networks, Earth Networks and Lightning Protection, Central Battery & UPS System, ELV Systems, BMS, CCTV & Access Control System, DG Installation, DATA Centre Consultancy, Authorized Service Center Mitsubishi Electric Japan FOR Electrical Product) with over a decade of industry-leading experience. Our skilled professionals prioritize safety, reliability, and efficiency in every project we undertake works.

CUTTING EDGE ELECTRICAL SYSTEMS AND INNOVATIVE SOLUTIONS

ATARASHI GROUP

THE PILLAR BEHIND OUR SUCCESS



Atarashi Group

Atarashi Group success is built upon a foundation of core pillars that drive our mission and vision. Innovation propels us forward, ensuring we remain at the forefront of technological advancements in the power industry. Our commitment to reliability guarantees that our systems are dependable, providing consistent power to our customers. We prioritize sustainability, striving to minimize our environmental impact and promote a greener future. Our customer-focused approach ensures that every decision we make centers on delivering exceptional service and exceeding expectations. Quality is embedded in our processes, ensuring that our products and services meet the highest standards. Teamwork fuels our collaborative spirit, allowing us to achieve more together. Integrity guides our actions, ensuring we uphold the highest ethical standards. Adaptability enables us to navigate the ever-changing landscape of the energy sector, staying responsive to new challenges and opportunities. Efficiency in our operations maximizes our productivity and value. Lastly, our pursuit of excellence drives us to continuously improve and set new benchmarks in the industry. Together, these pillars form the bedrock of our company, powering our journey toward a brighter and more sustainable future.

MISSION

To emerge as the most capable and enduring system partner by providing cutting edge electrical systems and innovative solutions.

VISION

Creating an environment that helps in the creation of knowledge and its application to work, and to excel in all our business activities and strive to build Atarashi Group. Creative organization.



CORE VALUES

The foundation of our corporate culture considers these following core values:

- Commitment to customer satisfaction & quality
- Excellent customer service
- Safety, security & growth for
- Customers & team members
- A Caring culture and learning environment
- Continuous Technological up
- Gradation



These core values represent our key beliefs in the way we do business, how we interact within our workplace and our partnership with clients.

Govt. Approved “B” class electrical contractors delivering smart power solution.



ATARASHI GROUP

Pride in introducing ourselves as the highly managed company engaged in the execution of large turnkey projects. Known for fulfilling its promise since 2018 the company has built an enviable reputation of being India's Govt. With an extensive experience in this diversified industry, the company has provided many different electrical contracting projects to a wide range of different industries. From electrical installations, communication cabling to building automated systems, we are the company to choose for your next project. We believe in building long-term relationships and thus offer lasting values to our customers. Being a reputed and reliable organization in field of turnkey Contractors in India, we offer high services products and efficient to our most valued customers which have enabled us with sample success.

Spectrum of Services

POWER. PERFORMANCE. PROFESSIONALISM

Atarashi Group has gained a vast experience in providing turnkey solutions for electrical project & installation. With unique capabilities the company has been handling more than 37 major projects in las 5-6 years with complete Clients. Being a GOVT. Approved Class 'An' Electrical contractor with capabilities to handle many projects, the following are some of the products and services we offer:

- Electrical Trunkey Project .
- Electrical Substation up to 132 kV.
- Captive Power Plants.
- Solar System.
- Power Distribution System .
- HV/MV & LV Switchgear, Package Substation.
- Transformers, RMU, DG Sets.
- External Lightning Work.
- Internal Electrical Services.
- Cable Distribution Networks.
- Earth Networks and Lightning Protection.
- Central Battery & UPS System.
- ELV Systems.
- BMS, CCTV & Acers Central System.
- Diesel Generator (DG) Installation.
- DATA Centre Consultancy.
- Authorized Service Center Mitsubishi Electric Japan FOR Electrical Product.

Fabrication of M.S. Steel and Fitting of Washer G.I. Ducts. Air Loading, Shifting & Erection of all type of industrial machineries Maintenance Equipment's. & Prefabof IndustrialShed.

We combine the best people resources, system and service in the Industry to deliver the best to you. The successful projects undertaken are the eminent examples of Atarashi Group. in every field.



CORE TEAM

We are dedicated to help you along the way. Atarashi Group is successful because of our team approaches. We have a highly professional and experienced team who are experts in their own field and working to take the company to greater heights. They are committed to customers and always looking forward to serving their needs with over 2 years of combined experience in the industry, our team members have the knowledge and expertise to exceed any and every expectation for each project, we build a team with the expertise to complete the work, on time, on budget, and with quality.

OUR SAFETY POLICY

We believe in the policy “SAFETY FIRST IS SAFETY ALWAYS”

Rich Pool of Seasoned Technicians & Engineers to Handle Complex Assignments.

“Every member of Atarashi Group strive to create an accident free environment while delivering the best quality standards and stay committed to the safety and growth of the eco systems” As an electrical company, we have a standard safety manual that dictates the safety to be taken at job site which is implemented by a safety Officer. We assure to follow all the site safety measurements that help us to Create an environment with “Zero Accidental” possibilities protecting the lives and health of our employees; it also prevents damage to property and avoids work interruption.



Atarashi group’ wide experience for executing lv & hv works.

NO OUTSOURCING

We have vast experience of working for Government and big corporate on PAN India basis.

We have our own strong for undertaking desesigning and Nothing is being outsourced, thus leading to better control of all project external customer. deliverables.

STRONG TEAM

Team we have a strong specialist Group in Project Planning and Execution to execution for electrical contracts. Facilitate the smooth and close loop control and integration of internal and

EPC TURNKEY PROJECTS

- Complete Electrical distribution up to 33 KV
- Compact Sub Station
- Installation & Testing of Transformers
- High-Mast, H-Pole & 4Pole structure
- LT/HT/EHT Distribution
- Captive Power Generation Electrical Panel
- HT/LT Panels & Cabling
- DG Sets & UPS Systems
- Earthing & grounding Electrical Distribution and Equipment
- Industrial Services and Power Utilization
- Loading, Unloading, Shifting & Dismantling
- Annual Maintenance Contracts
- Provide Liasoning for respective dept.
- Internal & External Lighting

CORPORATE HEALTH, SAFETY, ENVIRONMENTAL MANAGEMENT

Organizations documents such as procedures, work instructions, checklist and training tools to ensure all those. Affected by the HSE management System are aware of their role and Responsibilities, maintain a safe work environment and comply with Atarashi Group and regulatory policy and standards.



OUR QUALITY POLICY

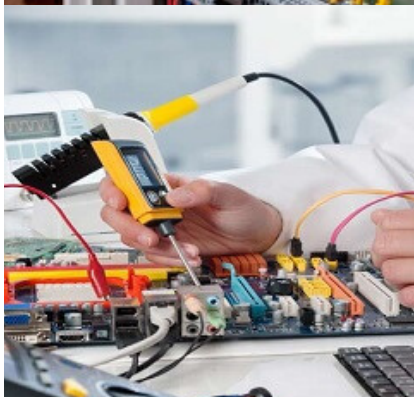
Your quality concerns are always a first priority. Quality is the nucleus where focus our utmost attention. Being accredited with an ISO 900:2015 certification Atarashi Group has strengthened its quest for quality management collaboration with quality controllers in rendering our services to our esteemed clients based in different parts of the world. Being a renowned electrical contractor, we ensure that the services offered by us are reliable & consistent, thus we are getting huge appreciation from our numerous clients. Further, we duly test our products at several quality parameters to ensure their flawless performance.



The Major Elements of Project Execution Plan are-Scope definition, Goal Statement, Quality & Technical Specification, Resource allocation & Project Scheduling.

OUR POTENTIAL

Atarashi Group is one of leading electrical contractor which is energy requirements. The company has full capabilities in helping to produce high quality, reliable energy that engineering, projects management and supplying spares drives the economic opportunity. The company has been for various industries. Since its inception, the company has associated with India's progress for over years and has a lived its aim of "powering a cleaner world" by identifying, long-standing reputation for providing highly innovative delivering and peration clean power projects and services and sustainable electrical solutions for Meeting the to our customers across the globe.

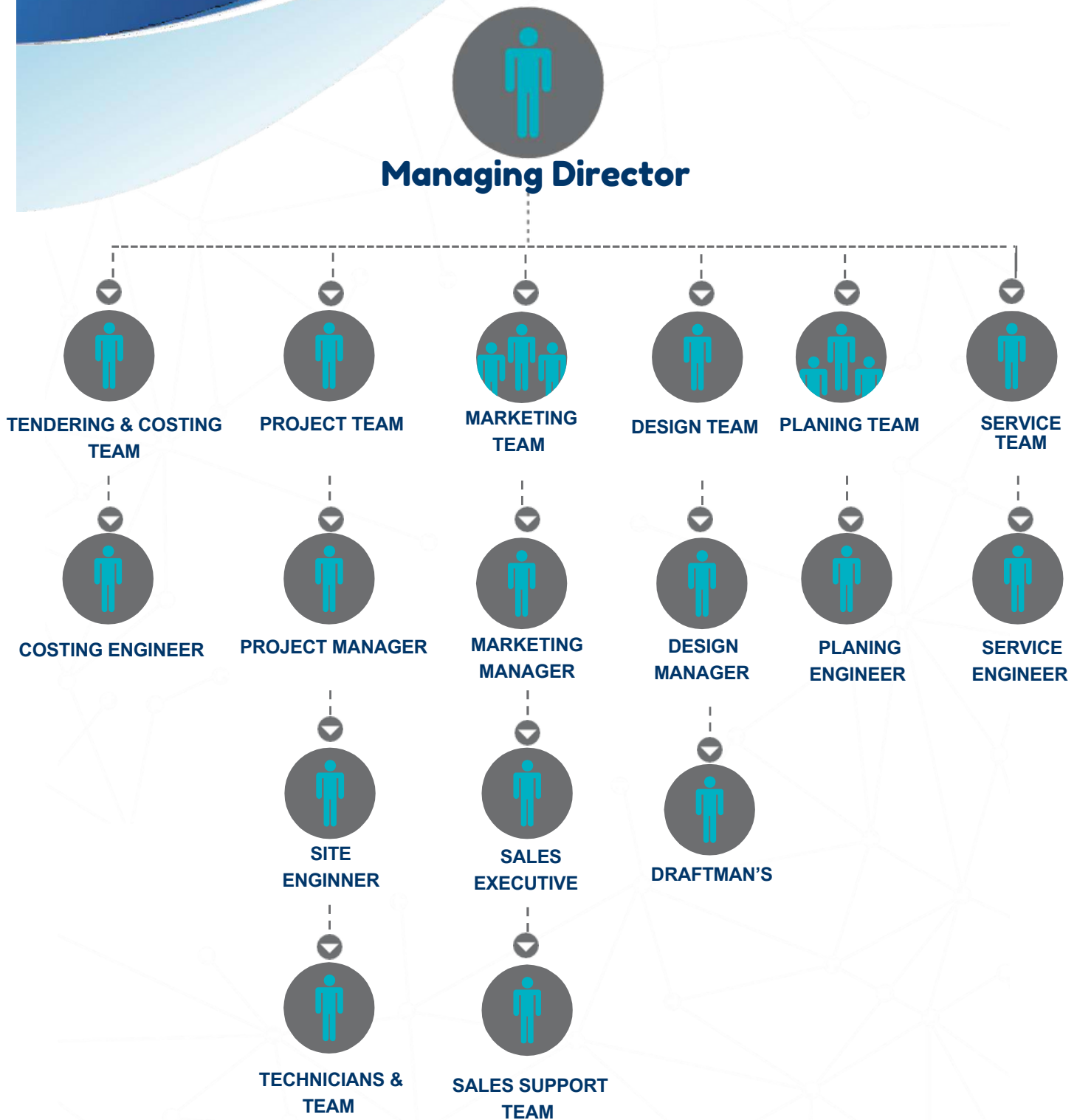


Project Execution Material Resources

.Multimeter (Range0-1000 AC/DC)	08 Nos.
. Earth Tester	05 Nos.
. Lux Meter	03 Nos.
. Meggar (up to 5000 ohms)	04 Nos.
. Hammer& Drill Machine	15 Nos.
. Hand Grinders	15 Nos.
. Welding Machine	08 Nos.
. Chain Pulley block (Capacity 05 Ton)	05 Nos.
. Aluminum Ladder (50ft)	02 Nos.
. Aluminum Ladder (20ft)	05 Nos.
. Crimping Tools (Hydraulic) 400mm	08 Nos.
. General Tools (i.e. Pliers, Screw Drivers, Box Spanners etc.)	LOT.
. Safety Equipment (i.e. Helmet, Goggles Belt, Gloves etc.)	LOT.



ORGANIZATION CHART



Project Record /Highlights: -

1. M/s Jackson & Company Bhiwadi (COMPLETED) (Project Cost Rs.300 Lakh.) (2021- 2022) Project Completed: -

- INSTALLATION & COMMISSIONING OF 500 KVA, 11 KV TRANSFORMER/HT PANEL/RTCC PANEL/4 POLE STRUCTURES.
- HT CABLE/HT CT /PT CUBICAL PANEL/HT TERMINATION in HT Side.
- INSTALLATION & COMMISSIONING OF LT PANELS
- SUPPLY & INSTALLATION COMMISSIONING OF INTERNAL LIGHTING.
- SUPPLY & INSTALLATION COMMISSIONING OF EARTHING SYSTEMS.

2. M /s Havel's India Ltd (Ghelot) (Completed) Project Cost 123 Lakh.) Time Duration (2020-2021). HANDOVER MAY-2021

- INSTALLATION & COMMISSIONING OF HT CABLE WORKS.
- INSTALLATION & COMMISSIONING OF PANEL/LT PANELS/CABLE TRAYS.
- SUPPLY INSTALLATION & COMMISSIONING INTERNAL LIGHTING/LIGHTING
- SUPPLY & INSTALLATION COMMISSIONING OF TELEPHONE SYSTEM.
- SUPPLY & INSTALLATION COMMISSIONING EARTHING SYSTEMS.

3. M/s Y-Tech India Pvt. Ltd. Neemrana (Alwar).Running Time Duration 2013-2014. Project Cost 79 Lacs.)

- SUPPLY INSTALLATION & COMMISSIONING OF 2 POLE STRUCTURES /HT CABLE/HT TERMINATION IN HT SIDE.
- SUPPLY & INSTALLING, COMMISSIONING OF CABLE TRAY & OTHER LT WORK.
- SUPPLY & INSTALLING, COMMISSIONING OF PANEL & MACHINE (INSTALLING ONLY) AS PER DRAWING.
- INSTALLATION & COMMISSIONING OF LT CABLE WORKS.
- SUPPLY INSTALLATION & COMMISSIONING OF PANEL/IT PANELS/CABLE TRAYS.

4. M/s Hitachi Astron Noida (Uttar Pradesh).Running Time Duration 2024. Project Cost 10 Lacs.)

- LT PANEL INSTALLATION, UPS TYPE, SINGLE PHASE,THREE PHASE.
- CABLE INSTALLATION.
- TRANSFORMER INSTALLATION 5KVA.
- TRANSFORMER INSTALLATION 150KVA.
- CABLE LAYING 300 SQUARE MM, 240 SQUARE MM, 185 SQUARE MM, 95 SQUARE MM, 10 SQUARE MM, 6 SQUARE MM, 3 SQUARE MM, 2.5 SQUARE MM.

Work Profile

We are dealing in plant Erection, commissioning, Wiring of all Electrical Equipment, s We have a good & sound team for all type of LT, HT and Cabling Works & Fabrication i.e. A sound Engineer, Supervisor, Forman & wire mans, in our team we have a good cable jointer termination, Cable laying, earthing job, perforated cable tray laying jobs etc. A good working experience of LT & HT Commissioning.

List of Our Few Clients:-

M/S Jackson & Company- Bhiwadi

M/S Rei Industries Ltd

M/S Climate System India Ltd. Bhiwadi

M/S Veena Infra, Bilaspur

M/SDalsh Bio-Tech Ltd.

M/S B.Jain Industries

M/S Joyti Automobile / Fortune Car.

M/S Bal Krishna Industries Ltd. Bhiwadi

M/S Fcc Clutch India Pvt. Ltd. (Tapukra)

M/S Om Steel Tube Ltd..

M/S Paramount Cable Ltd.

M/S Siegwerk India Private Ltd. -Bhiwadi

M/S Asian Color Coated Ltd.

M/S Jai Kali Maa Industries

M/S Tata Projects Ltd. Site Hsidc.

M/S Relexo, Bahadurgarh

M/S CMR Nikkei India Pvt Ltd – Gujarat

M/S DLJM – Bhiwadi

M/S Kei Industries, Bhiwadi

M/S Uni - Product India Ltd. Dharuhera

M/S N.G.B.P.S. Ltd.

M/S Pk Tube & Fitting P. Ltd.

M/S P.N.R. Weld Tech. P.Ltd.

M/S Indo Nissin Feed Ltd.

M/S Jai Shree Karpa Cement P.Ltd.

M/S Lioyed Electrical & Engg.

M/S M.S. Plastic Pvt. Ltd.

M/S Enkei Cast Alloys.

M/S Sentex Impex P. Ltd.

OUR ESTEEMED CLIENTS

We work closely with a wide range of clients form different sectors and regions across public sector, private sector and local and national government





Thank You



ATARASHI GROUP

**Address: TC – 715, Capital High Street Bhiwadi, Alwar (Rajasthan)
-301019**

Email: adbpsiplt@gmail.com , amit@atarashiin.org

Ph. No: 01493-493862, 9511592221, www.atarashiin.org

